

BERTOLINI®

Millennia Church Chair



Top Benefits

- **Stores Compactly:** Easy to move around and store; stacks 6-8 chairs high
- **Eco-friendly:** Made of recyclable materials, including a 100% recyclable steel frame
- **Comfortable:** Show the congregation you care with a padded foam seat and backrest
- **Customizable:** Make a statement with 8 frame colors & over 30 fabric options



Overview

The Millennia Church Chair is a customizable stacking church chair with enhanced features and styling. Millennia Church Chairs utilize only the highest quality materials and innovative manufacturing processes to ensure longevity and comfort.

The seat features a plush cushion that's 3.5" (8.8 cm) thick and made with dual density foam, which features a softer layer on top with a firmer layer beneath. This chair also has a padded, contoured back with silhouette styling (which has no exposed frame). Beneath the foam, our Ergo-V molded plastic backrest base simultaneously flexes and supports for extraordinary comfort.

These church chairs make it easy and affordable to provide the best seating and worship experience for your congregation.

Previously known as: 4015, 4015A

Lead time: 12 to 14 weeks

Features

- Provides high comfort and ergonomic support
- Choose from 4 standard fabrics or 33 premium fabrics
- Features a sturdy wooden seat base with a 3.5-inch, dual-density foam cushion
- Choose from standard pew ganging, radius ganging, or retractable ganging (upcharge)
- Durable bootied glides (available in black, clear, or swivel) protect floors
- Backed by a rock-solid warranty
- Ergo-V plastic backrest base for enhanced comfort and sound absorption

Dimensions

	Millennia	Millennia w/ Arms
Chair Width	20.25 in	23 in
Chair Height	35 in	35 in
Chair Depth	26.25 in	26.25 in
Seat Width	20 in	20 in
Seat Height	18.75 in	18.75 in
Seat Depth	18.5 in	18.5 in
Seat Foam Thickness	3.5 in	3.5 in
Seat Foam Type	Dual-density virgin TDI foam	Dual-density virgin TDI foam
Arm Height		26.75 in
Back Pitch	17.5 degrees	17.5 degrees
Seat Pitch	7 degrees	7 degrees
Weight	16.6 lbs.	19.8 lbs.
Weight Capacity	1,000 lbs.	1,000 lbs.
Stack Height	8 chairs high	6 chairs high
Recommended Egress	36 in	36 in
Frame Material	Steel	Steel
Frame Metal Thickness	16 gauge	16 gauge
Frame Tube Size	1" on legs, 3/4" on back and base	1" on legs, 3/4" on back and base
Testing Certifications	Exceeds ANSI/BIFMA X5.1:2017	Exceeds ANSI/BIFMA X5.1:2017

Warranty	25 year frame, 5 year fabric, 20 year foam	25 year frame, 5 year fabric, 20 year foam
----------	--	--

Custom Fabric Requirements

	Millennia
Seat	0.55 yd.
Back	0.58 yd.
Total Yardage	1.13 yd.
Total Yardage w/ Fabric Card Pocket	1.25 yd.

Add-ons

Back of Seat (Select one option)



Card and
Cup Holder



Fabric Card
Holder



Pencil and
Card Holder

Bottom of Seat (Select one option)



Coffee Cup
Holder

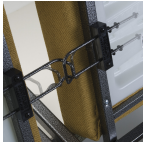


Communion
Cup Holder



Standard
Book Rack

Ganging (Select one option)



Retractable
Ganging



Wire
Ganging

Legs (Select one option)



L-Brackets

Arm Option

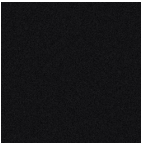
- Add armrest,
- No armrests

Fabrics

- Visit our [Fabric Center](#) to see compatible fabrics.

Finishes

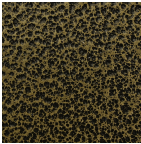
Grade 1 Colors (included in price):



Black Sand



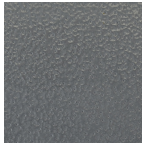
Bronze Vein



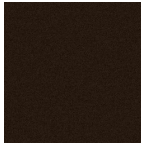
Gold Vein II



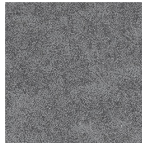
Grey Sand



Iron
Hammer



Java



Silver Vein

Carts



Heavy Duty 5-Wheel
Chair Dolly



Standard Church Chair
Dolly