

# BERTOLINI®

## Impressions Church Chair



## Top Benefits

- **Comfortable:** Features a plush, padded foam seat and backrest (fully upholstered)
- **Customizable:** Make a statement with 18 frame colors & hundreds of fabric options.
- **Stores compactly:** Easy to move around and store; stacks 6-8 chairs high.
- **Eco-friendly:** GREENGUARD Certified. Made of 100% recyclable materials.



## Overview

The NEW Impressions worship chair is uniquely engineered to make it the best church chair on the market. This worship chair is available in two seat widths: 20-inch and 22-inch.

100% made in the USA, this church chair is customizable and unmatched for quality and comfort. This chair features our plushest, 3.8–4.0 lb. cold-cured, MDI foam, which is custom molded at our factory for incredible durability and comfort. It also features our patented FormFlex™ seat base. And finally, this chair is built with our award-winning Ergo-V backrest, which cradles and cushions the back for unbeatable ergonomic support.

Impressions Church Chairs make it easy and affordable to provide the best seating and worship experience for your congregation.

Previously known as: 77025, 7025, 7025A, 77005, 7005, 7005

Lead time: 6 to 9 weeks

## Back Styles



Lumbar  
Cutout  
(Standard)



Full Length

## Features

- Made in the USA for a high-quality chair that lasts longer and maintains its professional appearance
- Provides unbeatable ergonomic support and comfort
- FormFlex™ seat base for enhanced comfort and durability
- Upholstered with your choice of non-wearing, commercial-grade upholstery (over 50 fabric options)
- Durable bootied glides protect your floors (available in black, clear, or swivel)
- Features a zero-maintenance design including screwless attachment points and replaceable backs/seats
- Choose from a lumbar cutout back or a full-length back
- Backed by a rock-solid warranty
- Choose from standard pew ganging, retractable ganging (upcharge), or radius ganging

Dimensions

	Impressions 20"	Impressions 20" w/arms	Impressions 22"
Chair Width	20.5 in	23 in	22 in
Chair Height	35 in	35 in	35 in
Chair Depth	26.5 in	26.5 in	26.5 in
Seat Width	20 in	20 in	22 in
Seat Height	18.75 in	18.75 in	18.75 in
Seat Depth	18 in	18 in	18 in
Seat Foam Thickness	3.5 in	3.5 in	3.5 in
Seat Foam Type	Aerospace grade cold-cured molded foam	Aerospace grade cold-cured molded foam	Aerospace grade cold-cured molded foam
Back Foam Thickness	Font 1.25 in & .25 in / Back .25 in	Font 1.25 in & .25 in / Back .25 in	Font 1.25 in & .25 in / Back .25 in
Arm Height		26.75 in	
Back Pitch	17.5 degrees	17.5 degrees	17.5 degrees
Seat Pitch	7 degrees	7 degrees	7 degrees
Weight	18.85 lbs.	22 lbs.	20 lbs.
Weight Capacity	1,000 lbs.	1,000 lbs.	1,000 lbs.
Stack Height	8 chairs high	6 chairs high	6 chairs high
Recommended Egress	36 in	36 in	36 in
Frame Material	Steel	Steel	Steel
Frame Metal Thickness	16 gauge	16 gauge	16 gauge

Frame Tube Size	1" on legs, 7/8" on back and base	1" on legs, 7/8" on back and base	1" on legs, 7/8" on back and base
Testing Certifications	Greenguard, exceeds ANSI/BIFMA X5.1:2017	Greenguard, exceeds ANSI/BIFMA X5.1:2017	Greenguard, exceeds ANSI/BIFMA X5.1:2017
Warranty	25 year frame, 5 year fabric, 25 year foam	25 year frame, 5 year fabric, 25 year foam	25 year frame, 5 year fabric, 25 year foam

Custom Fabric Requirements

	Impressions 20"	Impressions 20" w/arms	Impressions 22"
Seat	0.61 yd.	0.61 yd.	0.71 yd.
Back	0.64 yd.	0.64 yd.	0.74 yd.
Total Yardage	1.25 yd.	1.25 yd.	1.45 yd.
Total Yardage w/ Fabric Card Pocket	1.50 yd.	1.50 yd.	1.70 yd.

## Add-ons

### Back of Seat (Select one option)



Card and  
Cup Holder



Fabric Card  
Holder



Pencil and  
Card Holder

### Bottom of Seat (Select one option)



Coffee Cup  
Holder

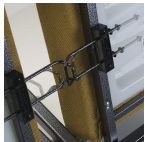


Communion  
Cup Holder



Standard  
Book Rack

### Ganging (Select one option)



Retractable  
Ganging



Wire  
Ganging

### Legs (Select one option)



L-Brackets

## Chair Widths & Arm Options

- 20" w/armrest,
- 20" wide,
- 22" wide

Fabrics

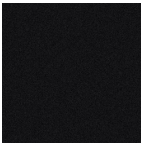
- Visit our [Fabric Center](#) to see compatible fabrics.

Finishes

Grade 1 Colors (included in price):



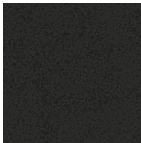
Black Gloss



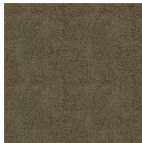
Black Sand



Bronze Vein



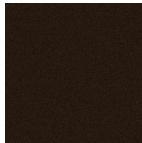
Charcoal Hammertone



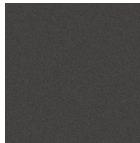
Gold Vein



Gunmetal



Java



Pewter Sand



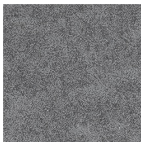
Satin Nickel



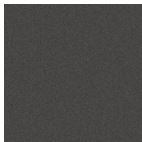
Silver AR



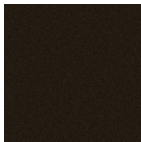
Silver Sand



Silver Vein



Tungsten Sand

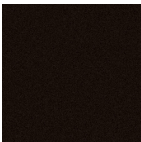


Urban Bronze Sand

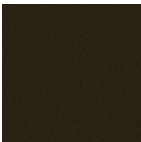
Grade 2



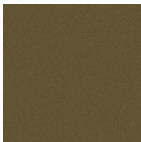
Champagne



Cocoa



Dark Gold Sand



Vintage Gold

Carts



Heavy Duty 5-Wheel Chair Dolly



Standard Church Chair Dolly