

BERTOLINI®

Essentials Church Chair



Top Benefits

- **Stores Compactly:** Easy to move around and store; stacks 6-8 chairs high.
- **Eco-friendly:** Made of recyclable materials, including a 100% recyclable steel frame.
- **Comfortable:** Show the congregation you care with a padded foam seat and backrest.
- **Customizable:** Make a statement with 8 frame colors & over 30 fabric options.



Overview

The Essentials Chair is a stacking church chair built for durability and value. It features an ergonomic design and a plush foam seat made with dual density foam—a soft layer on top and a firm layer beneath for support.

This chair stacks 8 high (6 for chairs with armrests), allowing you to move congregational seating areas around as needed and add seating during busy holiday services.

Your congregation will enjoy the comfort provided by the Essentials Church Chair, so they can focus on what really matters—worship!

Previously known as: 2005, 2005A, 2004, 2205, 2805

Lead time: 12 to 14 weeks

Features

- Constructed to give long-term leg comfort with a rolled front seat cushion
- Durable foot glides protect floors (available in black, clear, or swivel)
- Supports up to 1,000 lbs. (453.5 kg) with a strong steel frame and torsion bar system
- Built for durability and comfort with a commercial-grade, 3.5 inch, dual-density seat cushion
- Backed by a rock-solid warranty
- Replaceable backs/seats
- Upholstered with your choice of non-wearing, commercial-grade upholstery (over 30 fabric options)
- Interlock chairs together into neat rows by adding standard pew ganging, retractable ganging, or radius (curved row) ganging

Dimensions

	Essentials	Essentials w/ Arms
Chair Width	20.25 in	23 in
Chair Height	35 in	35 in
Chair Depth	26.25 in	26.25 in
Seat Width	20 in	20 in
Seat Height	18.75 in	18.75 in
Seat Depth	18.5 in	18.5 in
Seat Foam Thickness	3.5 in	3.5 in
Seat Foam Type	Dual-density virgin TDI foam	Dual-density virgin TDI foam
Arm Height		26.75 in
Back Pitch	17.5 degrees	17.5 degrees
Seat Pitch	7 degrees	7 degrees
Weight	17.85 lbs.	21.2 lbs.
Weight Compacity	1,000 lbs.	1,000 lbs.
Stack Height	8 chairs high	6 chairs high
Recommended Egress	36 in	36 in
Frame Material	Steel	Steel
Frame Metal Thickness	16 gauge	16 gauge
Frame Tube Size	1" on legs, 3/4" on back and base	1" on legs, 3/4" on back and base
Testing Certifications	Exceeds ANSI/BIFMA X5.1:2017	Exceeds ANSI/BIFMA X5.1:2017

Warranty	25 year frame, 5 year fabric, 20 year foam	25 year frame, 5 year fabric, 20 year foam
----------	--	--

Custom Fabric Requirements

	Essentials
Seat	0.50 yd.
Back	0.63 yd.
Total Yardage	1.13 yd.
Total Yardage w/ Fabric Card Pocket	1.25 yd.

Add-ons

Back of Seat (Select one option)



Card and
Cup Holder



Fabric Card
Holder



Pencil and
Card Holder

Bottom of Seat (Select one option)



Coffee Cup
Holder



Communion
Cup Holder



Standard
Book Rack

Ganging (Select one option)



Retractable
Ganging



Wire
Ganging

Legs (Select one option)



L-Brackets

Arm Option

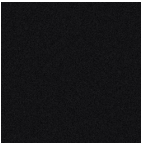
- Add armrest,
- No armrests

Fabrics

- Visit our [Fabric Center](#) to see compatible fabrics.

Finishes

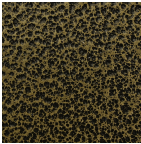
Grade 1 Colors (included in price):



Black Sand



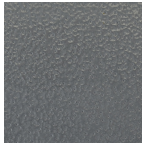
Bronze Vein



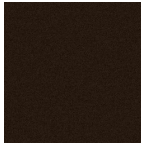
Gold Vein II



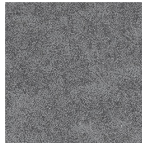
Grey Sand



Iron
Hammer



Java



Silver Vein

Carts



Heavy Duty 5-Wheel
Chair Dolly



Standard Church Chair
Dolly